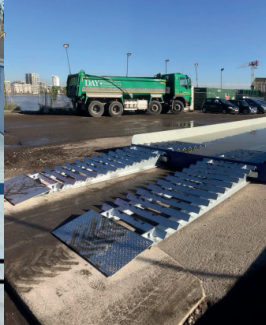
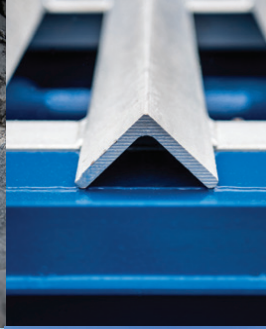


# ecobath



**BUILT  
WITH  
PRIDE™**

## High-performance drive through bath system

A simple, high performance drive-through bath system designed to prevent the spread of dirt and debris on to public highways from site vehicles.

The Ecobath is a simple drive-through system with clever design features and a modular construction that makes it adaptable to many different sites - especially remote locations or wherever there are no electrical services available. The 32.8' long central bath allows up to three complete wheel revolutions through the water, while removable internal grids of steel angle flex open the tire treads, allowing dirt to fall out, and the water washes the surface of the treads.

When installed above ground, 9.8' access ramps are supplied and a sturdy horizontal road can also be provided in 13' sections for additional dry vibration cleaning.

Using a combination of ramps and horizontal road sections, any length of configuration can be applied.

### Key Points

The internal grids can be easily removed to access the base of the bath for easy, periodic maintenance. The optional horizontal road can be located before and after the bath section to make it suitable for articulated vehicles. Ecobath systems are delivered and mounted where possible. They are easy to install, relocate, and are available for sale or rental.

- Eco friendly
- 2,615 gallon capacity
- For sale and rent
- Mobile road option
- Optional 9.84' ramps
- Can resist 22,046 pounds per axle as standard



MOBILE



NO OPERATOR



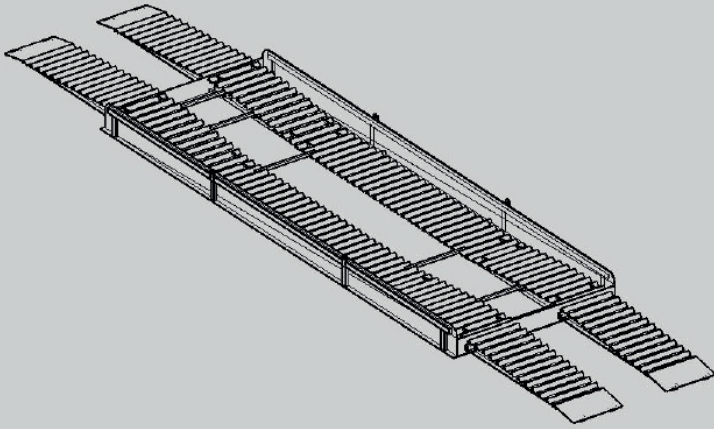
EASY MAINTENANCE



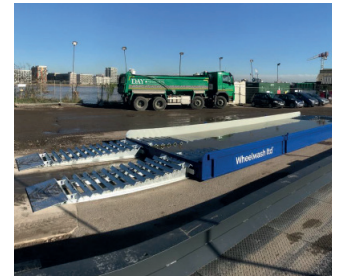
NO POWER



NO WATER



Steel angle flexes tire treads open



Tire tread is submerged



Optional mobile road provides additional cleaning



Integrated lifting eyes for easy relocation

## Specifications

Sections	Sizes
Central Bath Section	32.8' x 11.48' x 1.64' 10,251.5 lbs
Maximum Total Water	2615 Gallons
Ramps	9.84' x 3.28' x .98' 848.78 lbs (each)
Mobile Road	13.12' x 3.28' x .98' 1212.5 lbs (each)

## Customer Requirements

- Clear lifting zone for offloading with truck mounted crane
- Compacted level hardcore or concrete / tarmac base
- Able to provide at least 2,615 gallons of water at time of installation / commissioning
- Nominated site personnel to be available for training

## Additional Information

We supply:

- Free of charge consultations
- Technical drawings & lifting plans
- Maintenance contracts for purchased units
- Technical support from trained and experienced engineers

